



CARE PATHWAY

FarlaFIBRE

Always ensure a full wound care assessment has been completed and the wound dimensions have been recorded.

Suggested Treatment Objectives

Effective management of wound exudate

Reduce wound dimensions

Fill wound cavity

Identify individual wound treatment objectives



CHECK FarlaCare WOUND CONTINUUM FOR WOUND TYPE

IS THE WOUND DEEP AND WET?

YES

Initiate treatment with FarlaFIBRE
and a suitable secondary dressing
e.g. FarlaFOAM-S or FarlaSORB

YES

First dressing change:
Has the treatment
objective been achieved?

YES

Weekly review
Continue with FarlaFIBRE until:
Exudate levels decrease, wound
cavity becomes more shallow.

Step down to FarlaFOAM-S

NO

Identify where the wound
fits with the continuum and
follow the pathway

NO

Identify why the treatment objective has not been reached:

- Is the wound too wet?
- Is the wound too dry?
- Too frequent dressing changes?
- Is the surrounding skin macerated?

Consider:

- Changing the dressing size or covering with a more absorbent dressing such as FarlaFOAM-S or FarlaSORB)
- Hydrating the wound if dry (e.g. Hydrogel dressing or FarlaLITE)
- Adding additional fibre/ cavity dressing if wound is deep
- Changing the therapy e.g. to compression, NPWT or antimicrobial dressing if there are signs of infection
- Peri-Wound Management

FarlaFIBRE Size

Product Code	Sizes	Fits Wound
545345	5x5cm	5x5cm
545346	10x10cm	10x10cm
545347	15x15cm	15x15cm
545348	2x45cm (Ribbon)	Cavity Wounds
545349	4x50cm (Rope)	Cavity Wounds

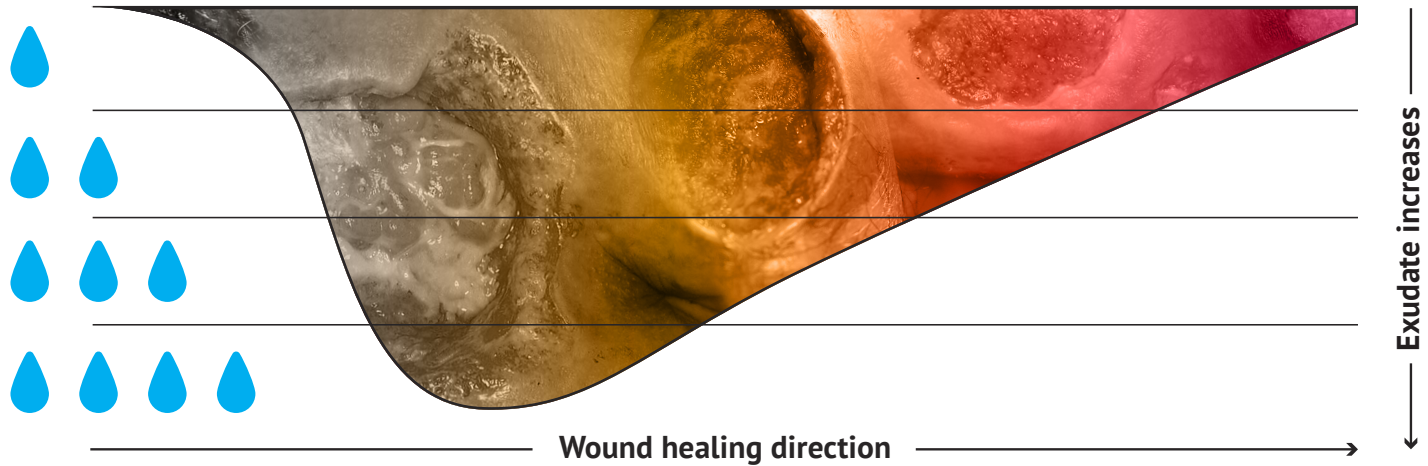
Discontinue the dressing if the patient has an adverse reaction to it or it becomes unsuitable for the patient in anyway.

If the wound does not progress please refer to tissue viability or wound care specialist.

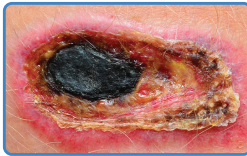
Supporting effective patient outcomes

Clinical Enquiries Helpline: +44 (0)330 118 6600 or clinical@farla.co.uk

FarlaCare Wound Continuum – Wound depth, type, location and exudate level influence dressing selection

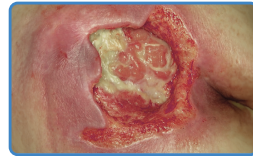


FarlaCONTACT can be used as a wound contact layer across all wound types.



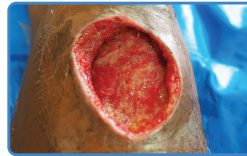
TYPE 1.

Dead tissue and skin. Add moisture to debride. Cover with a semi-occlusive dressing.



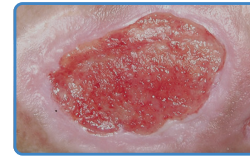
TYPE 2.

Yellow, slimy and stinky wound. Clean and dress with absorbent dressing. (e.g. FarlaFOAM.S)



TYPE 3.

Deep wound. Fill with fibre dressing (e.g. FarlaFIBRE) and cover with absorbant dressing.



TYPE 4.

Pink, knobby textured healing skin. Protect with absorbent dressing. (e.g. FarlaFOAM.S)



TYPE 5.

Pink healing skin. Protect with light absorbant dressing. (e.g. Hydrocolloid)

Dressing Selection - Select according to wound type and characteristics

FarlaFIBRE	FarlaSORB	FarlaFOAM·S	FarlaLITE
<p>CARES FOR DEEP WET WOUNDS (CAVITY & FLAT DRESSINGS AVAILABLE) ABSORBS FLUID SWELLS TO FIT WOUND PROMOTES HEALING REQUIRES COVER DRESSING</p>	<p>CARES FOR VERY WET WOUNDS ABSORBS & LOCKS IN FLUID PROTECTS HEALTH SKIN REQUIRES SECURING (CAN BE USED OVER FarlaFIBRE)</p>	<p>CARES FOR SHALLOW WET WOUNDS ABSORBS FLUID GENTLE ADHESIVE PROTECTS WOUND (CAN BE USED OVER FarlaFIBRE)</p>	<p>CARES FOR MINOR WET WOUNDS PROTECTS INTACT SKIN & WOUNDS PROMOTES AUTOLYTIC DEBRIDEMENT USEFUL TO PROTECT PINK HEALING SKIN</p>

