



CARE
PATHWAY

FarlaFOAM·S

Always ensure a full wound care assessment has been completed and the wound dimensions have been recorded.

Suggested Treatment Objectives

Effective management of wound exudate

Reduce wound dimensions

Protect wound and surrounding skin

Identify individual wound treatment objectives



CHECK FarlaCare WOUND CONTINUUM FOR WOUND TYPE

IS THE WOUND SHALLOW AND WET?

YES

Initiate treatment with FarlaFOAM·S

YES

First dressing change:
Has the treatment
objective been achieved?

YES

Weekly review
Continue with FarlaFOAM·S until:

Exudate levels decrease, wound
dimensions decrease.

Consider changing to a less absorbent
dressing (e.g. Hydrocolloid)

NO

Identify where the wound
fits with the continuum and
follow the pathway

NO

Identify why the treatment
objective has not been reached:

- Is the wound too deep?
- Is the wound too wet?
- Is the wound too dry?
- Too frequent dressing changes?
- Is the surrounding skin macerated?

Consider:

- Changing the dressing size or type (e.g. FarlaSORB)
- Hydrating the wound if dry (e.g. Hydrogel dressing or FarlaLITE)
- Adding fibre / cavity dressings (e.g. FarlaFIBRE) if wound is deep
- Changing the therapy e.g. to compression, NPWT or antimicrobial dressing if there are signs of infection
- Peri-Wound Management

FarlaFOAM·S Size

Product Code	Sizes	Fits Wound
545332	7.5x7.5cm	5x5cm
545333	10x10cm	6x6cm
545334	10x20cm	6x16cm
545336	15x15cm	11x11cm
545337	Flexi-Fit 18x17cm	13x12cm

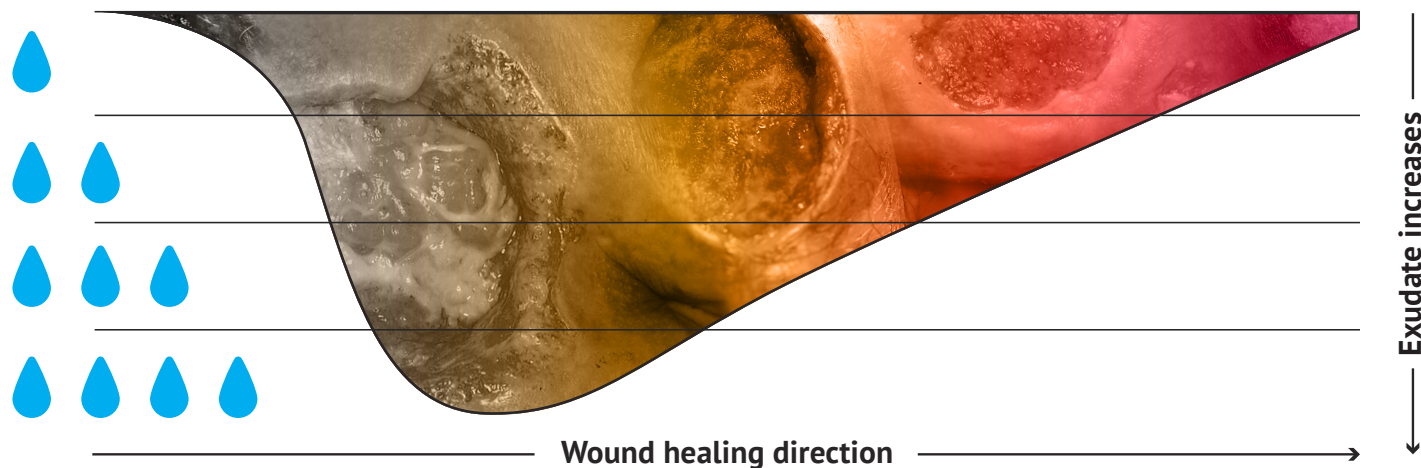
Discontinue the dressing if the patient has an adverse reaction to it or it becomes unsuitable for the patient in anyway.

If the wound does not progress please refer to tissue viability or wound care specialist.

Supporting effective patient outcomes

Clinical Enquiries Helpline: +44 (0)330 118 6600 or clinical@farla.co.uk

FarlaCare Wound Continuum – Wound depth, type, location and exudate level influence dressing selection



FarlaCONTACT can be used as a wound contact layer across all wound types.



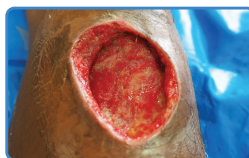
TYPE 1.

Dead tissue and skin. Add moisture to debride. Cover with a semi-occlusive dressing.



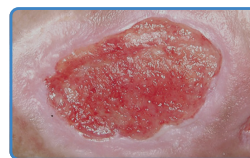
TYPE 2.

Yellow, slimy and stinky wound. Clean and dress with absorbent dressing. (e.g. FarlaFOAM.S)



TYPE 3.

Deep wound. Fill with fibre dressing (e.g. FarlaFIBRE) and cover with absorbant dressing.



TYPE 4.

Pink, knobby textured healing skin. Protect with absorbent dressing. (e.g. FarlaFOAM.S)



TYPE 5.

Pink healing skin. Protect with light absorbant dressing. (e.g. Hydrocolloid)

Dressing Selection - Select according to wound type and characteristics

FarlaFIBRE	FarlaSORB	FarlaFOAM·S	FarlaLITE
<p>CARES FOR DEEP WET WOUNDS (CAVITY & FLAT DRESSINGS AVAILABLE) ABSORBS FLUID SWELLS TO FIT WOUND PROMOTES HEALING REQUIRES COVER DRESSING</p>	<p>CARES FOR VERY WET WOUNDS ABSORBS & LOCKS IN FLUID PROTECTS HEALTH SKIN REQUIRES SECURING (CAN BE USED OVER FarlaFIBRE)</p>	<p>CARES FOR SHALLOW WET WOUNDS ABSORBS FLUID GENTLE ADHESIVE PROTECTS WOUND (CAN BE USED OVER FarlaFIBRE)</p>	<p>CARES FOR MINOR WET WOUNDS PROTECTS INTACT SKIN & WOUNDS PROMOTES AUTOLYTIC DEBRIDEMENT USEFUL TO PROTECT PINK HEALING SKIN</p>

