

Always ensure a full wound care assessment has been completed and the wound dimensions have been recorded.

**Suggested
Treatment
Objectives**

- Provide bacteria-proof dressing
- Promote autolytic debridement (removal of dead/sloughy tissue)
- Maintain moist healing environment
- Protect skin from damage e.g. excess moisture and/or adhesives
- Identify individual wound treatment objectives



CHECK FarlaCare WOUND CONTINUUM FOR WOUND TYPE

**IS THE WOUND A MINOR WOUND, SUPERFICIAL,
NEEDS MOISTURE OR A COVER DRESSING ?**

YES

**Initiate treatment with
FarlaLITE dressing**

YES

**First dressing change:
Has the treatment
objective been achieved?**

YES

**Weekly review
Continue with FarlaLITE until:
Wound heals**

**If using the dressing for removing
dead/sloughy tissue you may need
to use a more absorbent dressing
after this takes place.**

NO

**Identify where the wound
fits with the continuum and
follow the pathway**

NO

**Identify why the treatment
objective has not been reached:**

- Is the wound too wet?
- Is the wound too dry?
- Too frequent dressing changes?
- Is the surrounding skin macerated?

Consider:

- Changing the dressing size or type (e.g. FarlaFOAM-S)
- Hydrating the wound if dry (e.g. Hydrogel dressing)
- Using a gelling fibre dressing underneath the FarlaLITE (e.g. FarlaFOAM-S)
- Initiating fibre / cavity dressing (e.g. FarlaFIBRE) if wound is deep
- Peri-Wound Management

FarlaLITE Size

Product Code	Sizes	Fits Wound
545418	5x5cm	3x3cm
545419	10x10cm	8x8cm
545420	15x15cm	13x13cm

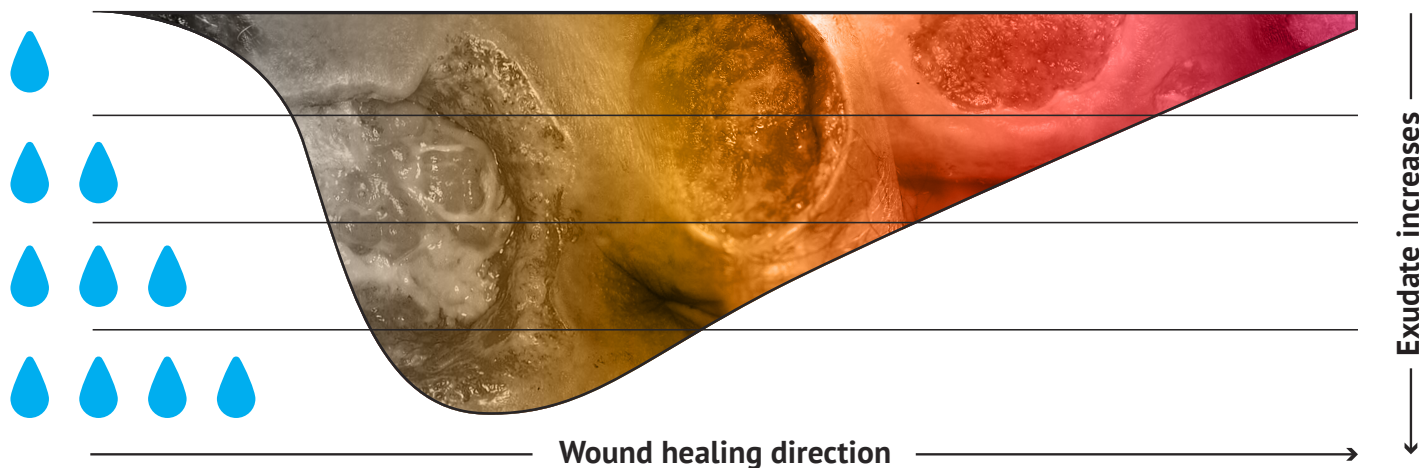
**Discontinue the dressing if the patient has an adverse reaction
to it or it becomes unsuitable for the patient in anyway.**

If the wound does not progress please refer to tissue viability or wound care specialist.

Supporting effective patient outcomes

Clinical Enquiries Helpline: +44 (0)330 118 6600 or clinical@farla.co.uk

FarlaCare Wound Continuum – Wound depth, type, location and exudate level influence dressing selection

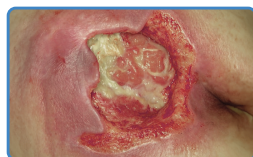


FarlaCONTACT can be used as a wound contact layer across all wound types.



TYPE 1.

Dead tissue and skin. Add moisture to debride. Cover with a semi-occlusive dressing.



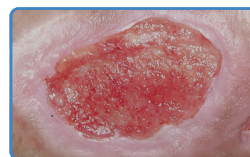
TYPE 2.

Yellow, slimy and stinky wound. Clean and dress with absorbent dressing. (e.g. FarlaFOAM.S)



TYPE 3.

Deep wound. Fill with fibre dressing (e.g. FarlaFIBRE) and cover with absorbant dressing.



TYPE 4.

Pink, knobby textured healing skin. Protect with absorbent dressing. (e.g. FarlaFOAM.S)



TYPE 5.

Pink healing skin. Protect with light absorbant dressing. (e.g. Hydrocolloid)

Dressing Selection - Select according to wound type and characteristics

FarlaFIBRE	FarlaSORB	FarlaFOAM-S	FarlaLITE
<p>CARES FOR DEEP WET WOUNDS (CAVITY & FLAT DRESSINGS AVAILABLE) ABSORBS FLUID SWELLS TO FIT WOUND PROMOTES HEALING REQUIRES COVER DRESSING</p>	<p>CARES FOR VERY WET WOUNDS ABSORBS & LOCKS IN FLUID PROTECTS HEALTH SKIN REQUIRES SECURING (CAN BE USED OVER FarlaFIBRE)</p>	<p>CARES FOR SHALLOW WET WOUNDS ABSORBS FLUID GENTLE ADHESIVE PROTECTS WOUND (CAN BE USED OVER FarlaFIBRE)</p>	<p>CARES FOR MINOR WET WOUNDS PROTECTS INTACT SKIN & WOUNDS PROMOTES AUTOLYTIC DEBRIDEMENT USEFUL TO PROTECT PINK HEALING SKIN</p>

