



CARE
PATHWAY

FarlaSORB

Always ensure a full wound care assessment has been completed and the wound dimensions have been recorded.

Suggested Treatment Objectives

- Effective management of very wet wounds
- Prevent/reduce skin damage
- Reduce dressing changes
- Protect garments and bed linen
- Identify individual wound treatment objectives



CHECK FarlaCare WOUND CONTINUUM FOR WOUND TYPE

IS THE WOUND VERY WET?

YES

Initiate treatment with
FarlaSORB dressing

YES

First dressing change:
Has the treatment
objective been achieved?

YES

Weekly review
Continue with FarlaSORB until:

Exudate levels decrease.
Step down to FarlaFOAM-S or similar.

NO

Identify where the wound
fits with the continuum and
follow the pathway

NO

Identify why the treatment
objective has not been reached:

- Is the wound too wet?
- Is the wound too dry?
- Too frequent dressing changes?
- Is the surrounding skin macerated?

Consider:

- Changing the dressing size or type (see FarlaCARE wound continuum)
- Hydrating the wound if dry (e.g. Hydrogel dressing or FarlaLITE)
- Initiating fibre/ cavity dressing (e.g. FarlaFIBRE) if wound is deep
- Changing the therapy e.g. to compression, NPWT or antimicrobial dressing if there are signs of infection
- Peri-Wound Management

FarlaSORB Size

Product Code	Sizes	Fits Wound
545338	10x10cm	6x6cm
545339	10x20cm	6x16cm
545341	15x20cm	11x16cm
545342	20x20cm	16x16cm
545343	20x30cm	16x26cm
545344	40x60cm	36x56cm

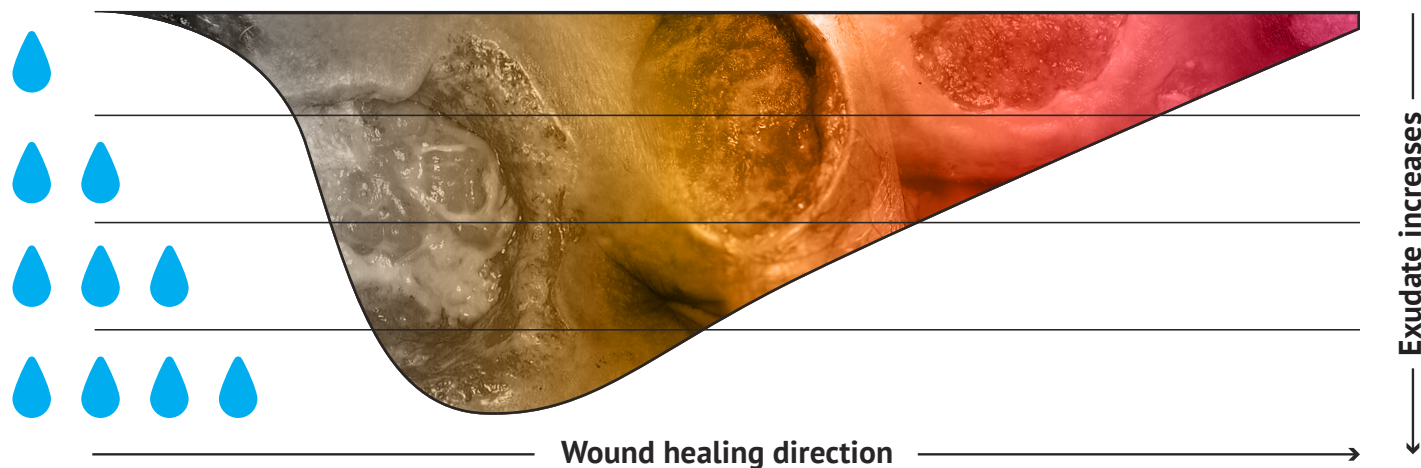
Discontinue the dressing if the patient has an adverse reaction to it or it becomes unsuitable for the patient in anyway.

If the wound does not progress please refer to tissue viability or wound care specialist.

Supporting effective patient outcomes

Clinical Enquiries Helpline: +44 (0)330 118 6600 or clinical@farla.co.uk

FarlaCare Wound Continuum – Wound depth, type, location and exudate level influence dressing selection

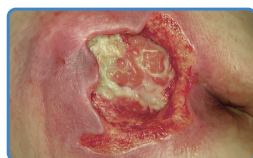


FarlaCONTACT can be used as a wound contact layer across all wound types.



TYPE 1.

Dead tissue and skin. Add moisture to debride. Cover with a semi-occlusive dressing.



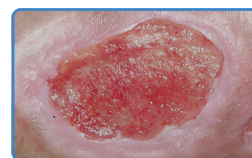
TYPE 2.

Yellow, slimy and stinky wound. Clean and dress with absorbent dressing. (e.g. FarlaFOAM.S)



TYPE 3.

Deep wound. Fill with fibre dressing (e.g. FarlaFIBRE) and cover with absorbant dressing.



TYPE 4.

Pink, knobby textured healing skin. Protect with absorbent dressing. (e.g. FarlaFOAM.S)



TYPE 5.

Pink healing skin. Protect with light absorbant dressing. (e.g. Hydrocolloid)

Dressing Selection - Select according to wound type and characteristics

FarlaFIBRE	FarlaSORB	FarlaFOAM·S	FarlaLITE
<p>CARES FOR DEEP WET WOUNDS (CAVITY & FLAT DRESSINGS AVAILABLE) ABSORBS FLUID SWELLS TO FIT WOUND PROMOTES HEALING REQUIRES COVER DRESSING</p>	<p>CARES FOR VERY WET WOUNDS ABSORBS & LOCKS IN FLUID PROTECTS HEALTH SKIN REQUIRES SECURING (CAN BE USED OVER FarlaFIBRE)</p>	<p>CARES FOR SHALLOW WET WOUNDS ABSORBS FLUID GENTLE ADHESIVE PROTECTS WOUND (CAN BE USED OVER FarlaFIBRE)</p>	<p>CARES FOR MINOR WET WOUNDS PROTECTS INTACT SKIN & WOUNDS PROMOTES AUTOLYTIC DEBRIDEMENT USEFUL TO PROTECT PINK HEALING SKIN</p>

