

**Always ensure a full wound care assessment has been completed and the wound dimensions have been recorded**

**Suggested Treatment Objectives**

**Effective management of wound exudate**  
**Reduce wound dimensions**  
**Fill wound cavity**



**CHECK FarlaCare WOUND CONTINUUM FOR WOUND TYPE**

**IS THE WOUND DEEP AND WET?**

**YES**

**NO**

**Initiate treatment with FarlaFIBRE and a suitable secondary dressing e.g. FarlaFOAM·S or FarlaSORB**

**Identify where the wound fits with the continuum and follow the pathway**

**First dressing change:-**  
has the treatment objective been achieved?

**NO**

**YES**

**Weekly review - continue with FarlaFIBRE until:-**

Exudate levels decrease, wound cavity becomes more shallow.  
Step down to FarlaFOAM·S

**Identify why the treatment objective has not been reached e.g.:-**

- Is the wound too wet?
- Is the wound too dry?
- Are dressings being changed too frequently?
- Is the surrounding skin macerated?

**Consider:-**

- Changing the cover dressing size or type (e.g. FarlaFOAM·S or FarlaSORB)
- Hydrating wound if dry (e.g. Hydrogel dressing)
- Adding additional fibre/cavity dressings if wound is too deep
- Changing the therapy e.g. to compression, NPWT or antimicrobial dressing if there are signs of infection

FarlaFIBRE Size		
Product Codes	Sizes	Fits Wound
545345	5cm x 5cm	5cm x 5cm
545346	10cm x 10cm	10cm x 10cm
545347	15cm x 15cm	15cm x 15cm
545348	2cm x 45cm (Ribbon)	For cavity wounds
545349	4cm x 50cm (Rope)	For cavity wounds

**Discontinue the dressing if the patient has an adverse reaction to it or it becomes unsuitable for the patient in anyway.**

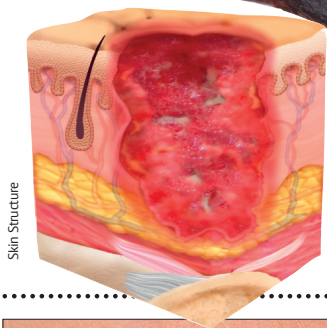
**If wound does not progress refer to tissue viability or wound care specialist**

Supporting effective patient outcomes:

Clinical Enquiries Helpline 0330 118 6600 or [clinical@farlainternational.com](mailto:clinical@farlainternational.com)

# FarlaCare Wound Continuum – Wound depth, type, location and exudate level influence dressing selection

WOUND HEALING DIRECTION



## Exudate Level Guide

- Dry wound
- Minimal fluid
- Moderate fluid
- Wet
- Very wet



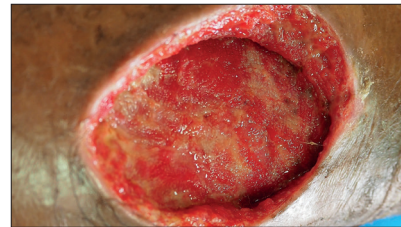
### TYPE 1.

Dead skin.  
Add moisture to debride  
e.g. hydrogel / honey  
and cover with  
semi-occlusive dressing



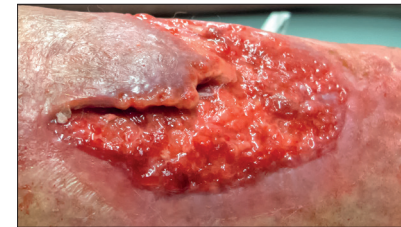
### TYPE 2.

Yellow, slimy, stringy wound.  
Clean and dress with  
absorbent dressing  
(e.g. Farla**FOAM-S**)



### TYPE 3.

Deep wound.  
Fill with Fibre dressing  
(e.g. Farla**FIBRE**) and cover  
with absorbent dressing  
(e.g. Farla**FOAM-S** or Farla**SORB**)



### TYPE 4.

Pink, knobby textured  
healing skin.  
Protect with absorbent  
dressing (e.g. Farla**FOAM-S**)



### TYPE 5.

Pink healing skin.  
Protect with light  
absorbent dressing  
(e.g. hydrocolloid)

Dressing selection - select according to wound type and characteristics, for example:-

### Farla**FIBRE**

CARES FOR DEEP WET WOUNDS  
(CAVITY AND FLAT DRESSINGS AVAILABLE)  
ABSORBS FLUID  
SWELLS TO FIT WOUND  
PROMOTES HEALING  
REQUIRES COVER DRESSING



### Farla**SORB**

CARES FOR VERY WET WOUNDS  
ABSORBS &  
LOCKS IN FLUID  
PROTECTS HEALTHY SKIN  
REQUIRES SECURING  
(CAN BE USED OVER Farla**FIBRE**)



### Farla**FOAM-S**

CARES FOR SHALLOW WET WOUNDS  
ABSORBS FLUID  
GENTLE ADHESIVE  
PROTECTS WOUND  
(CAN BE USED OVER Farla**FIBRE**)

