

Farla FIBRE INFO

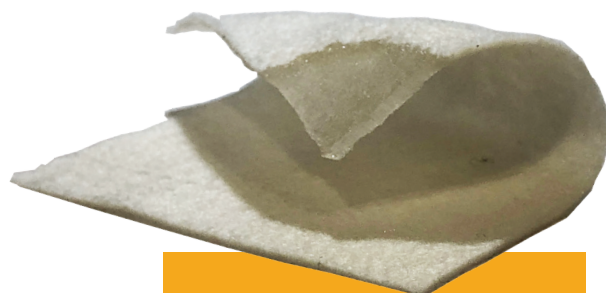


# CARES FOR DEEP WET WOUNDS

ABSORBS  
FLUID

FILLS  
WOUNDS

PROMOTES  
HEALING



GELLING FIBRE

REQUIRES COVER DRESSING



Designed to make a difference

## FarlaFIBRE Gelling Fibre Dressing

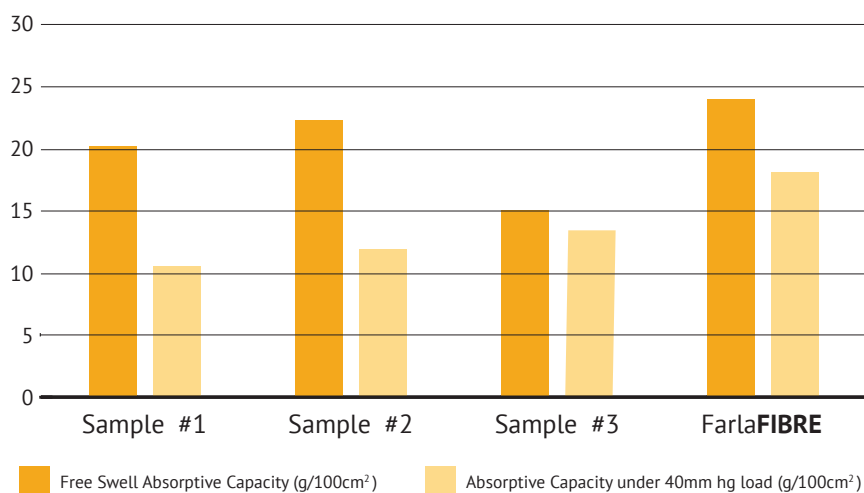
Farla**FIBRE** is a soft, conformable, non-woven dressing (sheet, rope or ribbon) composed of sodium carboxymethyl cellulose (CMC) fibres and enhanced high-density polyethylene (HDPE) with polyethylene terephthalate (PET).

This conformable and highly absorbent dressing absorbs wound fluid and forms a soft gel for ease of removal at dressing change. FarlaFIBRE maintains a moist environment which supports the body's natural healing process and aids the removal of unnecessary material from the wound (autolytic debridement), without damaging newly formed tissue.

Farla**FIBRE** is used for the management of moderate to heavily exuding acute or chronic wounds.

### Absorbency compared to leading brands

Gelling Fibre Test Report Comparative in Vitro Data



### Why is locking away exudate important?

Excess exudate is harmful to new tissue growth and may contain bacteria.

According to current knowledge wound exudate may also contain proteases including matrix metalloproteinases, MMP-2 and MMP-9, which are responsible for delayed wound healing.

*Unique needle spinning technology.*

*Special fibre blend to give a perfect balance between absorbency and wet strength.*

*Enhanced vertical and horizontal tensile strength and anti-shrink.*

### Key features and benefits:

- Contours to the wound bed
- Minimises space where bacteria can grow
- Maintains optimal wound healing environment
- Rapidly turns to transparent gel
- Locks away wound fluid and bacteria
- Helps protect the periwound area from maceration
- High wet strength facilitates one-piece removal

### Indications for use

For use on wet wounds:

- Leg ulcers
- Pressure ulcers
- Diabetic ulcers
- Surgical wounds
- Dermatological wounds
- Partial thickness burns
- Traumatic wounds
- Oncology wounds
- Cavity Wounds



## Get It Right First Time (GIRFT) – EVERY TIME



### Innovative approach to effective clinical decision making

- Aligns with NHS GIRFT
- Intuitive dressing selection



### Colour coded informative packaging

- Supports correct dressing selection
- Shows the size of the dressing and maximum wound size
- Linked to the FarlaCARE wound healing continuum



### User-friendly language promotes patient concordance

- Non-technical language to help clinical selection
- Supports patient usage



### Reduced pack size

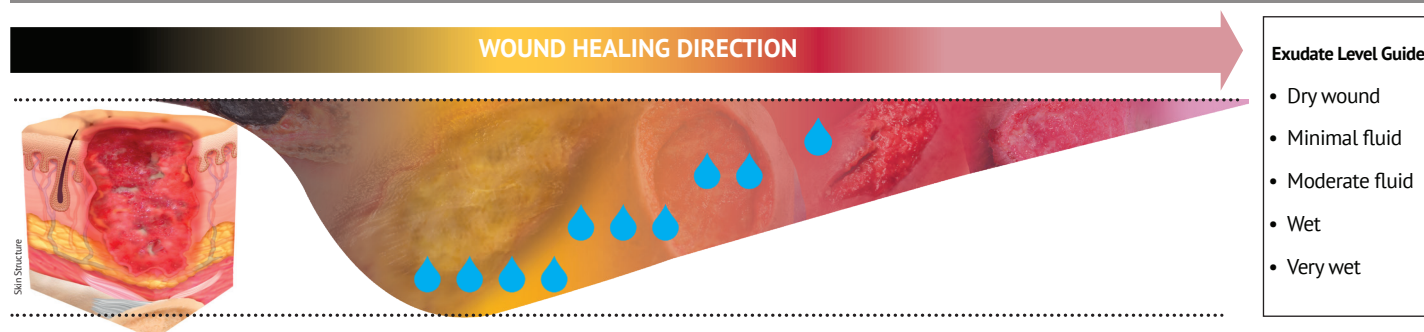
- 5 dressings per pack (minimises wastage)
- Support effective prescribing
- Helps support cost improvement programmes
- Encourages timely re-assessment of wound



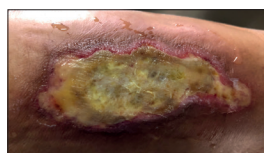
### Eco-friendly durable bags (not boxes)

- Easy storage solution
- Reduce carbon footprint
- Recyclable packaging

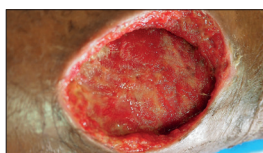
**FarlaCare Wound Continuum** - Wound depth, type, location and exudate level influence dressing selection



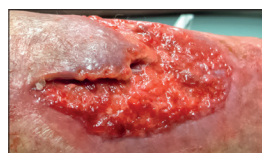
**TYPE 1.**  
Dead skin.  
Add moisture to debride  
e.g. hydrogel / honey  
and cover with  
semi-occlusive dressing



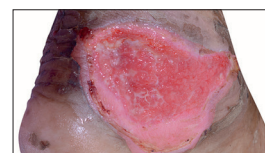
**TYPE 2.**  
Yellow, slimy, stringy wound.  
Clean and dress with  
absorbent dressing  
(e.g. Farla**FOAM-S**)



**TYPE 3.**  
Deep wound.  
Fill with Fibre dressing  
(e.g. Farla**FIBRE**) and cover  
with absorbent dressing  
(e.g. Farla**FOAM-S** or Farla**SORB**)



**TYPE 4.**  
Pink, knobby textured  
healing skin.  
Protect with absorbent  
dressing (e.g. Farla**FOAM-S**)



**TYPE 5.**  
Pink healing skin.  
Protect with light  
absorbent dressing  
(e.g. hydrocolloid)

**Dressing selection - select according to wound type and characteristics, for example:-**

<p><b>Farla<b>FIBRE</b></b></p> <p>CARES FOR DEEP WET WOUNDS (CAVITY AND FLAT DRESSINGS AVAILABLE) ABSORBS FLUID SWELLS TO FIT WOUND PROMOTES HEALING REQUIRES COVER DRESSING</p>	<p><b>Farla<b>SORB</b></b></p> <p>CARES FOR VERY WET WOUNDS ABSORBS &amp; LOCKS IN FLUID PROTECTS HEALTHY SKIN REQUIRES SECURING (CAN BE USED OVER Farla<b>FIBRE</b>)</p>	<p><b>Farla<b>FOAM-S</b></b></p> <p>CARES FOR SHALLOW WET WOUNDS ABSORBS FLUID GENTLE ADHESIVE PROTECTS WOUND (CAN BE USED OVER Farla<b>FIBRE</b>)</p>
---	---	--



Farla <b>FIBRE</b>	Farla <b>SORB</b>	Farla <b>FOAM-S</b>
<p><b>Gelling Fibre Dressing.</b></p> <p>Highly absorbent perfectly balanced absorbency and wet strength for use on moderate to highly exuding wounds.</p> <p>Rapidly swells to form a transparent gel, preventing leakage and maceration.</p> <p>Contours to the wound bed to minimise dead space where bacteria can live.</p> <p>High wet strength helps facilitate one-piece dressing removal.</p> <p>Flexible dressing with anti-shrinkage property, fills deep and cavity wounds</p> <p>Maintains an optimal moist healing environment.</p>	<p><b>Super Absorbent Dressing.</b></p> <p>High capacity dressing for use on moderate to heavily exuding wounds.</p> <p>Breathable waterproof backing with super absorbent and hydro penetrating non-woven contact layer.</p> <p>Provides superior absorption and locks exudate away.</p> <p>Multi-layered construction designed to facilitate fluid management.</p> <p>Helps promote faster wound healing.</p>	<p><b>Soft Silicone Adhesive Foam Dressing.</b></p> <p>Highly absorbent and flexible for use on moderately exuding wounds.</p> <p>Perforated soft silicone wound contact layer allows fluid to rapidly pass through.</p> <p>Offers an effective barrier function to exogenous bacteria helping to prevent fluid and bacterial strike through.</p> <p>Atraumatic silicone adhesive for pain-free dressing changes.</p> <p>Provides a moist wound environment to promote healing.</p>

5cm x 5cm	545345	10cm x 10cm	545338	7.5cm x 7.5cm	545332
10cm x 10cm	545346	10cm x 20cm	545339	10cm x 10cm	545333
15cm x 15cm	545347	15cm x 20cm	545341	10cm x 20cm	545334
2cm x 45cm (Ribbon)	545348	20cm x 20cm	545342	15cm x 15cm	545336
4cm x 30cm (Rope)	545349	20cm x 30cm	545343	Flexi-Fit 18cm x 17cm	545337
		40cm x 60cm	545344		