

Always ensure a full wound care assessment has been completed and the wound dimensions have been recorded

**Suggested
Treatment
Objectives**

Effective management of wound exudate
Reduce wound dimensions
Protect wound and surrounding skin



CHECK FarlaCare WOUND CONTINUUM FOR WOUND TYPE

IS THE WOUND SHALLOW AND WET?

YES

Initiate treatment with FarlaFOAM-S

NO

Identify where the wound fits with the continuum and follow the pathway

**First dressing change:-
has the treatment
objective been achieved?**

NO

YES

**Weekly review - continue with
FarlaFOAM-S until:-**

Exudate levels decrease, wound
dimensions decrease.

Consider changing to a less absorbent
dressing (e.g. Hydrocolloid)

**Identify why the treatment objective
has not been reached e.g.: -**

- Is the wound too deep?
- Is the wound too wet?
- Is the wound too dry?
- Are dressings being changed too frequently?
- Is the surrounding skin macerated?

Consider: -

- Changing the dressing size or type (e.g. FarlaSORB)
- Hydrating the wound if dry (e.g. Hydrogel dressing)
- Adding fibre/ cavity dressings (e.g. FarlaFIBRE) if wound is deep
- Changing the therapy e.g. to compression, NPWT or antimicrobial dressing if there are signs of infection

FarlaFOAM-S Size

Product Codes	Sizes	Fits Wound
545332	7.5cm x 7.5cm	5cm x 5cm
545333	10cm x 10cm	6cm x 6cm
545334	10cm x 20cm	6cm x 16cm
545336	15cm x 15cm	11cm x 11cm
545337	Flexi-Fit 18cm x 17cm	13cm x 12cm

**Discontinue the dressing if the patient has an adverse
reaction to it or it becomes unsuitable for the patient in anyway.**

If wound does not progress refer to tissue viability or wound care specialist

Supporting effective patient outcomes:

Clinical Enquiries Helpline 0330 118 6600 or clinical@farlainternational.com

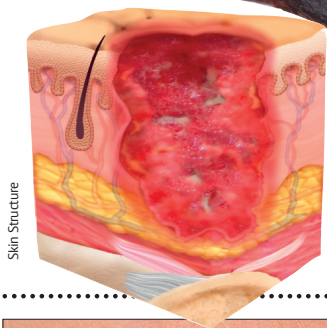


**CARE
PATHWAY**

FarlaFOAM-S

FarlaCare Wound Continuum – Wound depth, type, location and exudate level influence dressing selection

WOUND HEALING DIRECTION



Exudate Level Guide

- Dry wound
- Minimal fluid
- Moderate fluid
- Wet
- Very wet



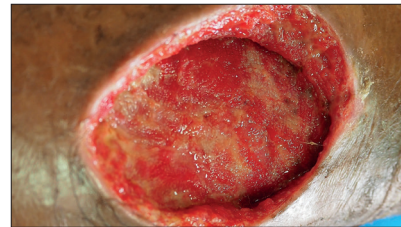
TYPE 1.

Dead skin.
Add moisture to debride
e.g. hydrogel / honey
and cover with
semi-occlusive dressing



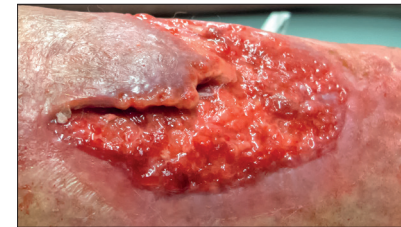
TYPE 2.

Yellow, slimy, stringy wound.
Clean and dress with
absorbent dressing
(e.g. Farla**FOAM-S**)



TYPE 3.

Deep wound.
Fill with Fibre dressing
(e.g. Farla**FIBRE**) and cover
with absorbent dressing
(e.g. Farla**FOAM-S** or Farla**SORB**)



TYPE 4.

Pink, knobby textured
healing skin.
Protect with absorbent
dressing (e.g. Farla**FOAM-S**)



TYPE 5.

Pink healing skin.
Protect with light
absorbent dressing
(e.g. hydrocolloid)

Dressing selection - select according to wound type and characteristics, for example:-

Farla**FIBRE**

CARES FOR DEEP WET WOUNDS
(CAVITY AND FLAT DRESSINGS AVAILABLE)
ABSORBS FLUID
SWELLS TO FIT WOUND
PROMOTES HEALING
REQUIRES COVER DRESSING



Farla**SORB**

CARES FOR VERY WET WOUNDS
ABSORBS &
LOCKS IN FLUID
PROTECTS HEALTHY SKIN
REQUIRES SECURING
(CAN BE USED OVER Farla**FIBRE**)



Farla**FOAM-S**

CARES FOR SHALLOW WET WOUNDS
ABSORBS FLUID
GENTLE ADHESIVE
PROTECTS WOUND
(CAN BE USED OVER Farla**FIBRE**)

