

# FarlaFOAM·S<sup>INFO</sup>



# CARES FOR SHALLOW WOUNDS WITH SILICONE

**ABSORBS  
FLUID**  
**GENTLE  
ADHESIVE**  
**PROTECTS  
WOUNDS**



**SILICONE FOAM BORDERED**

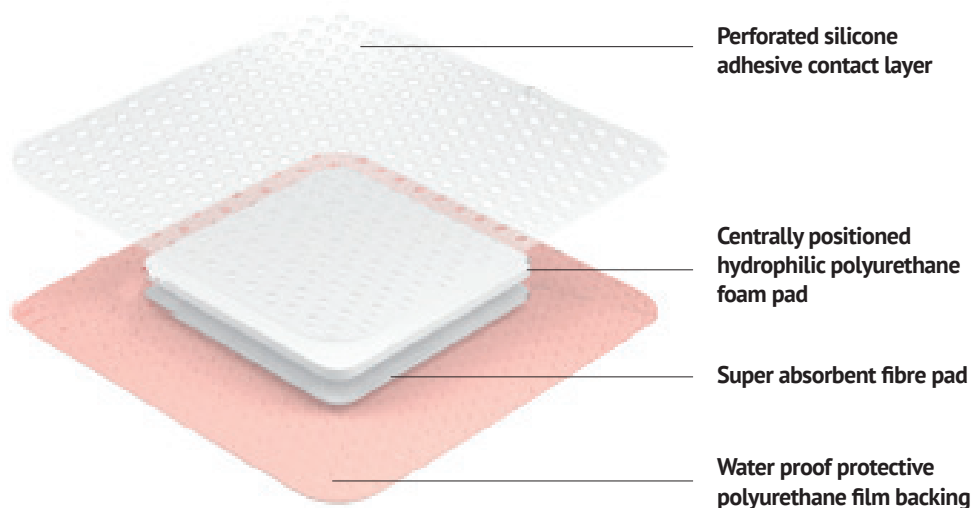


Designed to make a difference

## FarlaFOAM-S Silicone Foam Bordered Dressing

Farla**FOAM-S** is an absorbent bordered foam dressing with silicone gel adhesive for ease of positioning and removal. It is made up of polyurethane (PU) film backing, a super absorbent sodium carboxymethyl cellulose (CMC) layer, a hydrophilic polyurethane foam pad and a silicone gel adhesive wound contact layer with removable backing liners.

The combination of hydrophilic polyurethane foam and super absorbent fibre means Farla**FOAM-S** may be used to manage moderate to highly exuding wounds. The low friction backing and soft silicone adhesive wound contact layer helps to prevent skin damage (e.g. from sheer/ friction) and reduces the risk of post-operative blistering. Farla**FOAM-S** is used to treat wounds but may be used prophylactically to prevent healthy skin damage.



### Why is silicone adhesive important?

Does not adhere to wound when wet.

Pain free removal of dressing.

*Multi-layered highly absorbent adhesive dressing.*

*Perforated soft silicone wound contact layer for gentle wound management.*

## Key features and benefits:

- The silicone adhesive does not adhere to the wound therefore the dressing may be removed without pain or trauma
- Provides an effective barrier to bacteria as well as helping to prevent fluid and bacterial strike through
- The highly breathable top film helps to minimize the risk of maceration to the wound and peri-wound
- Flexible and conforms well to body contours
- Flexi-fit size available which combines the same high-absorbency and secure self-adhesion in an anatomically shaped dressing
- Can be used under a compression bandage
- Can be worn for up to 7 days

## Indications for use:

Farla FOAM-S is indicated for a wide range of exuding acute and chronic wounds including but not limited to:-

- Pressure ulcers,
- Leg/ foot ulcers
- Traumatic wounds e.g. skin tears, lacerations
- Surgical wounds



## Get It Right First Time (GIRFT) – EVERY TIME



### Innovative approach to effective clinical decision making

- Aligns with NHS GIRFT
- Intuitive dressing selection



### Colour coded informative packaging

- Supports correct dressing selection
- Shows the size of the dressing and maximum wound size
- Linked to the FarlaCARE wound healing continuum



### User-friendly language promotes patient concordance

- Non-technical language to help clinical selection
- Supports patient usage



### Reduced pack size

- 5 dressings per pack (minimises wastage)
- Support effective prescribing
- Helps support cost improvement programmes
- Encourages timely re-assessment of wound

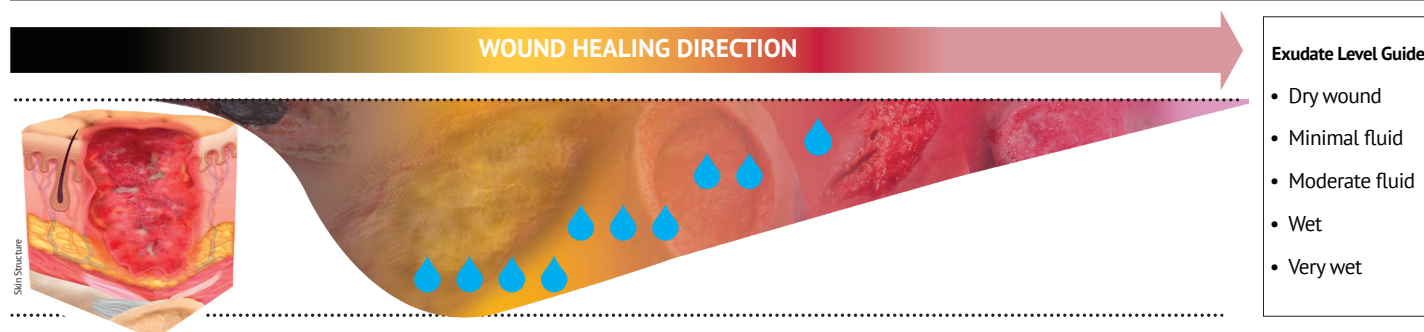


### Eco-friendly durable bags (not boxes)

- Easy storage solution
- Recyclable packaging
- Reduce carbon footprint

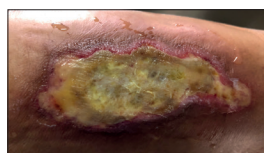
S  
T  
E  
E  
N  
E  
B

**FarlaCare Wound Continuum - Wound depth, type, location and exudate level influence dressing selection**



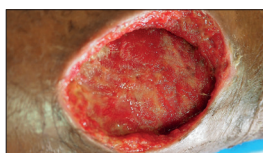
**TYPE 1.**

Dead skin.  
Add moisture to debride  
e.g. hydrogel / honey  
and cover with  
semi-occlusive dressing



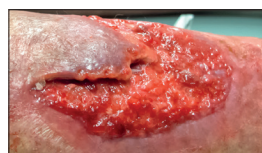
**TYPE 2.**

Yellow, slimy, stringy wound.  
Clean and dress with  
absorbent dressing  
(e.g. Farla**FOAM-S**)



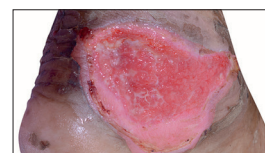
**TYPE 3.**

Deep wound.  
Fill with Fibre dressing  
(e.g. Farla**FIBRE**) and cover  
with absorbent dressing  
(e.g. Farla**FOAM-S** or Farla**SORB**)



**TYPE 4.**

Pink, knobby textured  
healing skin.  
Protect with absorbent  
dressing (e.g. Farla**FOAM-S**)



**TYPE 5.**

Pink healing skin.  
Protect with light  
absorbent dressing  
(e.g. hydrocolloid)

**Dressing selection - select according to wound type and characteristics, for example:-**

**Farla**FIBRE****

CARES FOR DEEP WET WOUNDS  
(CAVITY AND FLAT DRESSINGS AVAILABLE)  
ABSORBS FLUID  
SWELLS TO FIT WOUND  
PROMOTES HEALING  
REQUIRES COVER DRESSING

**Farla**SORB****

CARES FOR VERY WET WOUNDS  
ABSORBS &  
LOCKS IN FLUID  
PROTECTS HEALTHY SKIN  
REQUIRES SECURING  
(CAN BE USED OVER Farla**FIBRE**)

**Farla**FOAM-S****

CARES FOR SHALLOW WET WOUNDS  
ABSORBS FLUID  
GENTLE ADHESIVE  
PROTECTS WOUND  
(CAN BE USED OVER Farla**FIBRE**)



**Farla**FIBRE****

**Gelling Fibre Dressing.**

**Highly absorbent perfectly balanced absorbency and wet strength for use on moderate to highly exuding wounds.**

Rapidly swells to form a transparent gel, preventing leakage and maceration.

Contours to the wound bed to minimise dead space where bacteria can live.

High wet strength helps facilitate one-piece dressing removal.

Flexible dressing with anti-shrinkage property, fills deep and cavity wounds.

**Maintains an optimal moist healing environment.**

**Farla**SORB****

**Super Absorbent Dressing.**

**High capacity dressing for use on moderate to heavily exuding wounds.**

Breathable waterproof backing with super absorbent and hydro penetrating non-woven contact layer.

Provides superior absorption and locks exudate away.

Multi-layered construction designed to facilitate fluid management.

**Helps promote faster wound healing.**

**Farla**FOAM-S****

**Soft Silicone Adhesive Foam Dressing.**

**Highly absorbent and flexible for use on moderately exuding wounds.**

Perforated soft silicone wound contact layer allows fluid to rapidly pass through.

Offers an effective barrier function to exogenous bacteria helping to prevent fluid and bacterial strike through.

Atraumatic silicone adhesive for pain-free dressing changes.

**Provides a moist wound environment to promote healing.**

5cm x 5cm	545345	10cm x 10cm	545338	7.5cm x 7.5cm	545332
10cm x 10cm	545346	10cm x 20cm	545339	10cm x 10cm	545333
15cm x 15cm	545347	15cm x 20cm	545341	10cm x 20cm	545334
2cm x 45cm (Ribbon)	545348	20cm x 20cm	545342	15cm x 15cm	545336
4cm x 30cm (Rope)	545349	20cm x 30cm	545343	Flexi-Fit 18cm x 17cm	545337
		40cm x 60cm	545344		