



CARE
PATHWAY

FarlaLITE

Always ensure a full wound care assessment has been completed and the wound dimensions have been recorded

Suggested Treatment Objectives

- Provide secondary bacteria-proof dressing
- Promote autolytic debridement (removal of dead/sloughy tissue)
- Maintain moist healing environment
- Protect skin from damage e.g. excess moisture and/or adhesives
- Other : Identify individual treatment objectives



Does the wound fit in the right place in the FarlaCare Continuum:

YES

NO

Initiate treatment with FarlaLITE.

Identify where the wound fits with the continuum and follow the appropriate pathway.

First dressing change:-
has the treatment objective been achieved?

NO

YES

Weekly review continue with FarlaLITE until: Wound heals
If using the dressing for removing dead/sloughy tissue you may need to use a more absorbent dressing after this takes place.

Why has the treatment objective not been achieved?

- Is the wound too wet?
- Is there evidence of skin maceration
- Is the dressing being changed too frequently?
- Is the wound is too dry (desiccated, black hard eschar)

Consider:-

- Check the dressing is the right size for the wound.
- You may use a more absorbent dressing e.g. FarlaFOAM.S
- You may use a gelling fibre dressing underneath the FarlaLITE e.g. FarlaFIBRE
- You may use a hydrogel under the dressing to add moisture to the wound and aid dead/sloughy tissue removal (debridement)

Product codes	Sizes	Fits Wound
545418	5cm x 5cm	3cm x 3cm
545419	10cm x 10cm	8cm x 8cm
545420	15cm x 15cm	13cm x 13cm

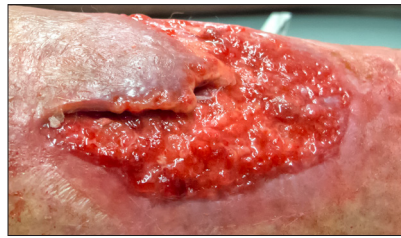
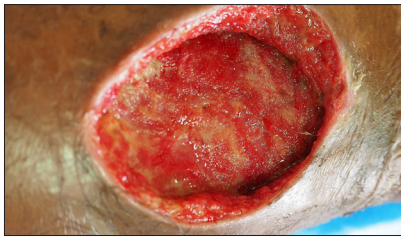
Dressing Selection: – Discontinue dressing if the patient has an adverse reaction to it or it becomes unsuitable for the patient in anyway.

If wound does not progress refer to tissue viability or wound care specialist

FarlaCare Wound Continuum – Wound depth, type, location and exudate level influence dressing selection



- Exudate Level Guide**
- Dry wound
 - Minimal fluid
 - Moderate fluid
 - Wet
 - Very wet



TYPE 1.
Dead tissue/skin add moisture to debride (e.g. hydrogel/honey or FarlaLITE). Cover with semi-occlusive dressing (e.g. FarlaLITE).

TYPE 2.
Yellow, slimy, stringy wound. Clean and dress with absorbent dressing (e.g. FarlaFOAM-S).

TYPE 3.
Deep wound. Fill with Fibre dressing (e.g. FarlaFIBRE) and cover with absorbent dressing (e.g. FarlaFOAM-S or FarlaSORB).

TYPE 4.
Pink, knobby textured healing skin. Protect with absorbent dressing (e.g. FarlaFOAM-S).

TYPE 5.
Pink healing skin. Protect with light absorbent dressing or hydrocolloid (e.g. FarlaLITE).

Dressing Selection: – If a primary non stick contact layer is required to protect the wound and surrounding skin from the risk of a secondary dressing sticking use FarlaCONTACT. Select dressings according to wound type and characteristics for example:-

 FarlaLITE	 FarlaFIBRE	 FarlaSORB	 FarlaFOAM-S	 FarlaLITE
Cares for minor wet and dry wounds (can be used over FarlaFIBRE or a hydrogel) Protects intact skin and wounds. Promotes autolytic debridement.	Cares for deep wet wounds (cavity and flat dressings available) absorbs fluid and swells to fit wound. Promotes healing and requires cover dressing (FarlaLITE or FarlaFOAM-S).	Cares for very wet wounds absorbs & locks in fluid. Protects healthy skin requires securing (can be used over FarlaFIBRE).	Cares for very wet wounds absorbs & locks in fluid. Protects healthy skin requires securing (can be used over FarlaFIBRE).	Cares for minor wet and dry wounds (can be used over FarlaFIBRE or a hydrogel) Protects intact skin and wounds Promotes autolytic debridement.