

**Always ensure a full wound care assessment has been completed
and the wound dimensions have been recorded**

**Suggested
Treatment
Objectives**

Effective management of very wet wounds
Prevent/reduce skin damage
Reduce dressing changes
Protect garments and bed linen



CHECK FarlaCare CONTINUUM FOR WOUND TYPE

IS THE WOUND VERY WET?

YES

NO

**Initiate treatment with
FarlaSORB dressing**

**Identify where the wound fits with
the continuum and follow
the pathway**

**First dressing change:-
has the treatment
objective been achieved?**

NO

YES

**Weekly review - continue with
FarlaSORB until:-**

Exudate levels decrease.
Step down to FarlaFOAM-S
or similar.

**Identify why the treatment objective
has not been reached e.g.: -**

- Is the wound too wet?
- Is the wound too dry?
- Are dressings being changed too frequently?
- Is the surrounding skin macerated?

Consider: -

- Changing the dressing size or type (see FarlaCAREwound continuum)
- Hydrating wound if dry
- Initiating fibre/ cavity dressing (e.g. FarlaFIBRE) if wound is deep
- Changing the therapy e.g. to compression, NPWT or antimicrobial dressing if there are signs of infection

FarlaSORB Size		
Product Codes	Sizes	Fits Wound
545338	10cm x 10cm	6cm x 6cm
545339	10cm x 20cm	6cm x 16cm
545341	15cm x 20cm	11cm x 16cm
545342	20cm x 20cm	16cm x 16cm
545343	20cm x 30cm	16cm x 26cm
545344	40cm x 60cm	36cm x 56cm

**Discontinue the dressing if the patient has an adverse
reaction to it or it becomes unsuitable for the patient in anyway.**

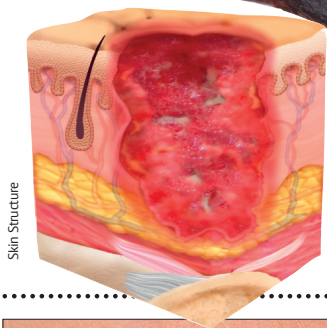
If wound does not progress refer to tissue viability or wound care specialist

Supporting effective patient outcomes:

Clinical Enquiries Helpline 0330 118 6600 or clinical@farlainternational.com

FarlaCare Wound Continuum – Wound depth, type, location and exudate level influence dressing selection

WOUND HEALING DIRECTION



Exudate Level Guide

- Dry wound
- Minimal fluid
- Moderate fluid
- Wet
- Very wet



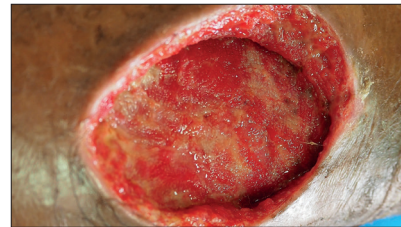
TYPE 1.

Dead skin.
Add moisture to debride
e.g. hydrogel / honey
and cover with
semi-occlusive dressing



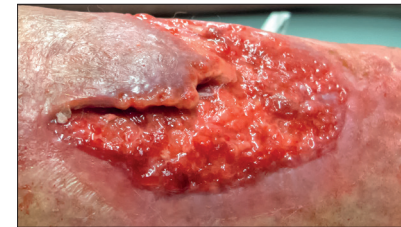
TYPE 2.

Yellow, slimy, stringy wound.
Clean and dress with
absorbent dressing
(e.g. Farla**FOAM-S**)



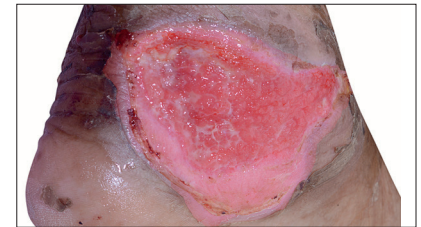
TYPE 3.

Deep wound.
Fill with Fibre dressing
(e.g. Farla**FIBRE**) and cover
with absorbent dressing
(e.g. Farla**FOAM-S** or Farla**SORB**)



TYPE 4.

Pink, knobby textured
healing skin.
Protect with absorbent
dressing (e.g. Farla**FOAM-S**)



TYPE 5.

Pink healing skin.
Protect with light
absorbent dressing
(e.g. hydrocolloid)

Dressing selection - select according to wound type and characteristics, for example:-

Farla**FIBRE**

CARES FOR DEEP WET WOUNDS
(CAVITY AND FLAT DRESSINGS AVAILABLE)
ABSORBS FLUID
SWELLS TO FIT WOUND
PROMOTES HEALING
REQUIRES COVER DRESSING



Farla**SORB**

CARES FOR VERY WET WOUNDS
ABSORBS &
LOCKS IN FLUID
PROTECTS HEALTHY SKIN
REQUIRES SECURING
(CAN BE USED OVER Farla**FIBRE**)



Farla**FOAM-S**

CARES FOR SHALLOW WET WOUNDS
ABSORBS FLUID
GENTLE ADHESIVE
PROTECTS WOUND
(CAN BE USED OVER Farla**FIBRE**)

