

FarlaSORB^{INFO}

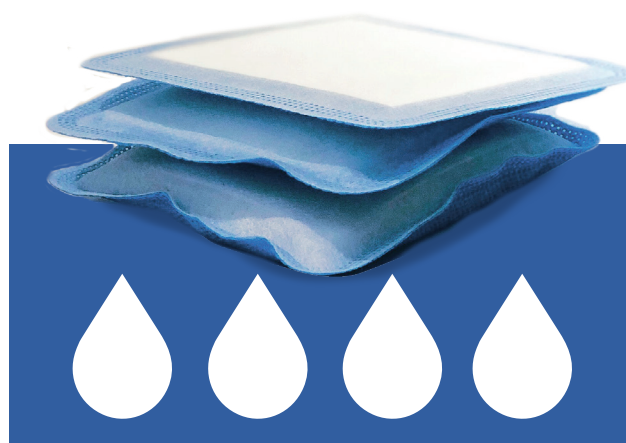


CARES FOR **VERY WET** WOUNDS

ABSORBS & LOCKS IN FLUID

PRESERVES **HEALTHY** SKIN

PROTECTIVE **BARRIER**



SUPER ABSORBENT
REQUIRES SECURING



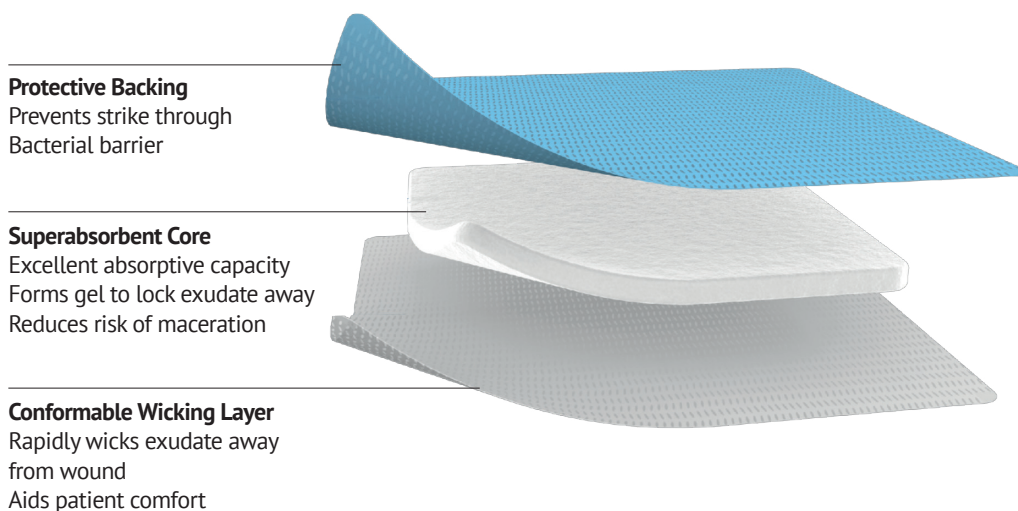
Designed to make a difference

FarlaSORB Super Absorbent Dressing

Farla**SORB** Super Absorbent Dressing is indicated for the management of moderate to heavily exuding wounds and consists of a breathable waterproof backing, a super absorbent pad and a rapid “hydro-penetrating” non-woven contact layer.

The multi-layered construction is designed for high fluid management, preventing wounds from being overly wet.

The superabsorbent dressing has an exudate “locking” feature, this helps to prevent exudate from damaging healthy skin, creating a moist healing environment and thereby promoting healing.



Why is locking away exudate important?

Excess exudate is harmful to new tissue growth and may contain bacteria.

According to current knowledge wound exudate may also contain proteases including matrix metalloproteinases, MMP-2 and MMP-9, which are responsible for delayed wound healing.

Excellent absorption capacity for use on heavily exuding wounds.

Multi-layered construction designed to facilitate fluid management and promote faster healing.

FAST
DROPS

Key features and benefits:

- High capacity exudate management minimises risk of maceration
- Traps wound fluid and locks components away
- Can be used under compression therapy

Indications for use:

For use on very wet wounds:

- Leg Ulcers
- Pressure Ulcers
- Diabetic Foot Ulcers
- Dehisced Surgical wounds
- Donor Sites



Get It Right First Time (GIRFT) – EVERY TIME



Innovative approach to effective clinical decision making

- Aligns with NHS GIRFT
- Intuitive dressing selection



Colour coded informative packaging

- Supports correct dressing selection
- Shows the size of the dressing and maximum wound size
- Linked to the Farla**CARE** wound healing continuum



User-friendly language promotes patient concordance

- Non-technical language to help clinical selection
- Supports patient usage



Reduced pack size

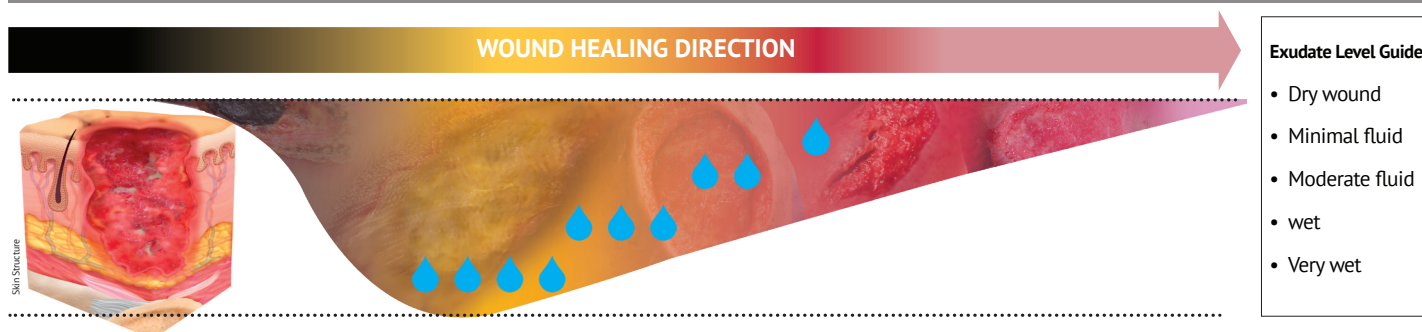
- 5 dressings per pack (minimises wastage)
- Support effective prescribing
- Helps support cost improvement programmes
- Encourages timely re-assessment of wound



Eco-friendly durable bags (not boxes)

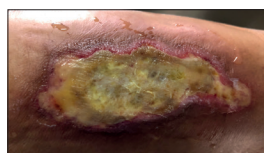
- Easy storage solution
- Reduce carbon footprint
- Recyclable packaging

FarlaCare Wound Continuum - Wound depth, type, location and exudate level influence dressing selection



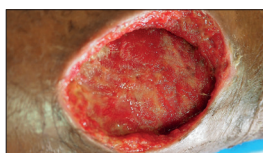
TYPE 1.

Dead skin.
Add moisture to debride
e.g. hydrogel / honey
and cover with
semi-occlusive dressing



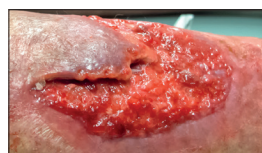
TYPE 2.

Yellow, slimy, stringy wound.
Clean and dress with
absorbent dressing
(e.g. Farla**FOAM-S**)



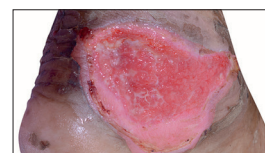
TYPE 3.

Deep wound.
Fill with Fibre dressing
(e.g. Farla**FIBRE**) and cover
with absorbent dressing
(e.g. Farla**FOAM-S** or Farla**SORB**)



TYPE 4.

Pink, knobby textured
healing skin.
Protect with absorbent
dressing (e.g. Farla**FOAM-S**)



TYPE 5.

Pink healing skin.
Protect with light
absorbent dressing
(e.g. hydrocolloid)

Dressing selection - select according to wound type and characteristics, for example:-

FarlaFIBRE****

CARES FOR DEEP WET WOUNDS
(CAVITY AND FLAT DRESSINGS AVAILABLE)
ABSORBS FLUID
SWELLS TO FIT WOUND
PROMOTES HEALING
REQUIRES COVER DRESSING



FarlaSORB****

CARES FOR VERY WET WOUNDS
ABSORBS &
LOCKS IN FLUID
PROTECTS HEALTHY SKIN
REQUIRES SECURING
(CAN BE USED OVER Farla**FIBRE**)



FarlaFOAM-S****

CARES FOR SHALLOW WET WOUNDS
ABSORBS FLUID
GENTLE ADHESIVE
PROTECTS WOUND
(CAN BE USED OVER Farla**FIBRE**)



FarlaFIBRE****

Gelling Fibre Dressing.

Highly absorbent perfectly balanced absorbency and wet strength for use on moderate to highly exuding wounds.

Rapidly swells to form a transparent gel, preventing leakage and maceration.

Contours to the wound bed to minimise dead space where bacteria can live.

High wet strength helps facilitate one-piece dressing removal.

Flexible dressing with anti-shrinkage property, fills deep and cavity wounds.

Maintains an optimal moist healing environment.

FarlaSORB****

Super Absorbent Dressing.

High capacity dressing for use on moderate to heavily exuding wounds.

Breathable waterproof backing with super absorbent and hydro penetrating non-woven contact layer.

Provides superior absorption and locks exudate away.

Multi-layered construction designed to facilitate fluid management.

Helps promote faster wound healing.

FarlaFOAM-S****

Soft Silicone Adhesive Foam Dressing.

Highly absorbent and flexible for use on moderately exuding wounds.

Perforated soft silicone wound contact layer allows fluid to rapidly pass through.

Offers an effective barrier function to exogenous bacteria helping to prevent fluid and bacterial strike through.

Atraumatic silicone adhesive for pain-free dressing changes.

Provides a moist wound environment to promote healing.

5cm x 5cm	545345	10cm x 10cm	545338	7.5cm x 7.5cm	545332
10cm x 10cm	545346	10cm x 20cm	545339	10cm x 10cm	545333
15cm x 15cm	545347	15cm x 20cm	545341	10cm x 20cm	545334
2cm x 45cm (Ribbon)	545348	20cm x 20cm	545342	15cm x 15cm	545336
4cm x 30cm (Rope)	545349	20cm x 30cm	545343	Flexi-Fit 18cm x 17cm	545337
		40cm x 60cm	545344		